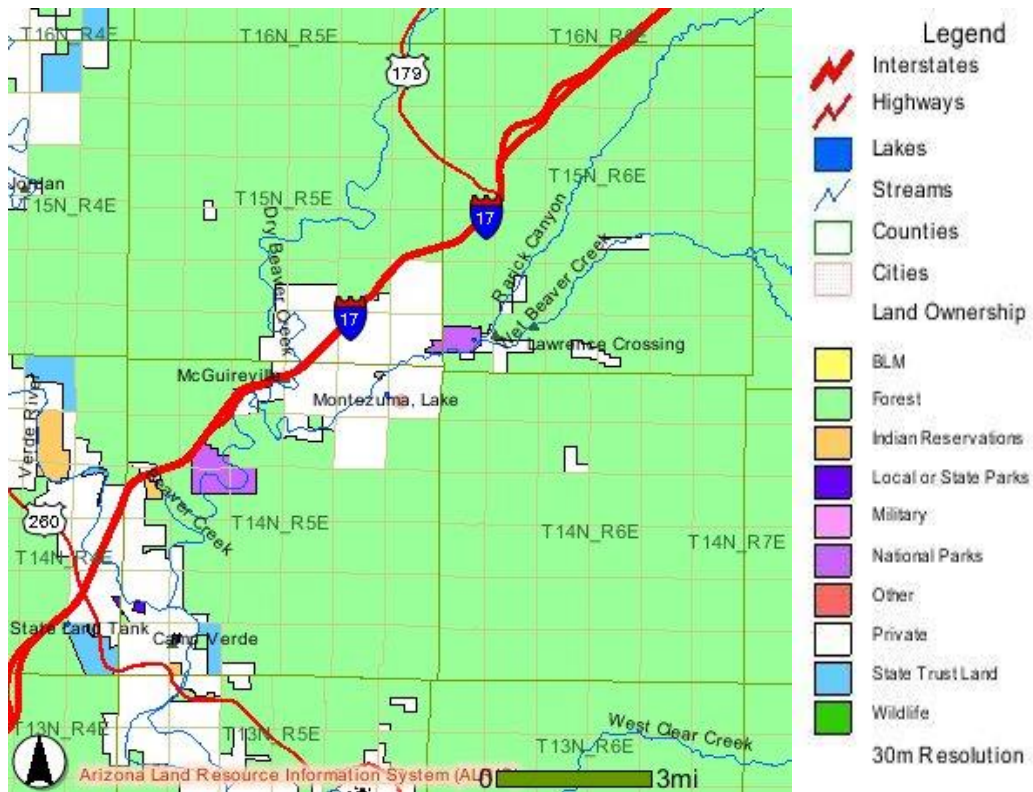


Beaver Creek: Unincorporated Communities of: Lake Montezuma/Rimrock/McGuireville



Photo by Matt Gardner



This series of unincorporated communities located just off of I-17 about 5 miles north of Camp Verde were the sites of some of the earliest non-native settlements in the Verde Valley. Originally ranches, farms, and rest-stops, the area boasts examples of early organization and cooperation amongst settlers in the forms of school and fire districts. Later evolving into dude ranches and retirement communities, Beaver Creek welcomes tourism with retail shops and restaurants. Nearby, Montezuma's Well is a National Park featuring a 700 year old Sinagua cliff dwelling adjacent to a water filled natural limestone sinkhole.

Beaver Creek Quick Facts:

Population: 4706

Elevation: 3350' to 3700'

Square Mileage: 544

County: Yavapai

Founded: 1960's

Incorporated: no

Highways: I-17, SR-179

Distance to Phoenix: 100

Distance to Tucson: 215

Distance to Grand Canyon: 130

Zip code(s): 86342



Picture by Loren Matson

Website(s)

Beaver Creek Regional Council: <http://www.beavercreekaz.org/> Represents Lake Montezuma, Rimrock, and McGuireville.

Beaver Creek Community Plan: <http://beavercreekaz.org/pdfs/BCCP-1992.pdf>
Adopted May 1992; update pending Includes open space and recreation element.

Beaver Creek Regional Council: <http://www.beavercreekaz.org/p&z.html> Planning & Zoning / Land Use Committee

Lake Montezuma Property Owners Association: <http://www.lakemontezuma.us/>

Yavapai County Planning & Zoning Ordinance:
<http://www.beavercreekaz.org/zoningordinance.pdf>

Social Media Pages: Coming Soon!

Profiles:

Muni Net Guide: Lake Montezuma:

<http://www.muninetguide.com/states/arizona/lake-montezuma/>

City Data: Lake Montezuma: <http://www.city-data.com/city/Lake-Montezuma-Arizona.html>

National & State Park Resources

- Fort Verde State Historic Park: <http://azstateparks.com/Parks/FOVE/indexhtml>
- National Forest and Red Rock Pass Information: <http://www.redrockcountry.org/>
- Montezuma Castle National Monument: <http://www.nps.gov/moca/index.htm>

Community Development Partners:

- Beaver Creek Elementary School: <http://www.bcs.k12.az.us/>
- Beaver Creek Regional Council: <http://www.beavercreekaz.org/>

Links:

Travel Information and Road Conditions:

- Arizona Department of Transportation 511: <http://www.az511.com/adot/files/>
- Arizona Road Conditions: <http://www.roadcondition.us/arizona.html>
- Arizona Guide: Camp Verde: <http://arizonaguide.com/places-to-visit/north-central-arizona/camp-verde>

Current and Extended Weather Forecast:

- National Weather Service: Lake Montezuma: <http://forecast.weather.gov/MapClick.php?lat=34.64789600772051&lon=>
- Weather Underground: Lake Montezuma <http://www.wunderground.com/cgi-bin/findweather/hdfForecast?query=Lake+Montezuma%2C+AZ>

Beaver Creek Experimental Watershed:

http://beavercreek.nau.edu/Hydrology/watershed_data.htm

Beaver Creek Biosphere Reserve:

<http://www.unesco.org/mabdb/br/brdir/directory/biores.asp?code=USA+27&mode=all>

Transaction Privilege Tax: Yavapai County:

<http://www.azdor.gov/Business/TPT/TPTRates/YavapaiCounty.aspx>

Property Tax Rates:

2010 PROPERTY TAX RATES									
YAVAPAI COUNTY									
PRIMARY TAX RATES					SECONDARY TAX RATES				
	YAVAPAI COUNTY		1.3524			FIRE DISTRICT ASSISTANCE		0.0813	
	SCHOOL EQUALIZATION		0.3564			FLOOD CONTROL DISTRICT		0.1994	
	YAVAPAI COLLEGE		1.2046			LIBRARY DISTRICT		0.1188	
	TOTAL PRIMARY FOR COUNTY		2.9134			YAVAPAI COLLEGE		0.1563	
						TOTAL SECONDARY FOR COUNTY		0.5558	
	Tax Rate per \$100.00 Assessed Valuation								
	Data Source: http://www.co.yavapai.az.us/uploadedFiles/Departments/Assessor/Tax%20Rates.pdf								

<http://www.azdor.gov/PropertyTax.aspx>

<http://2010.census.gov/2010census/>

<http://quickfacts.census.gov/qfd/states/04/04025.html>

Comparative Development Costs Survey Documents:

- **[Beaver Creek Planning & Zoning.pdf](#)**
- **[Lake Montezuma ACA.pdf](#)**



Photo by Bill Regner