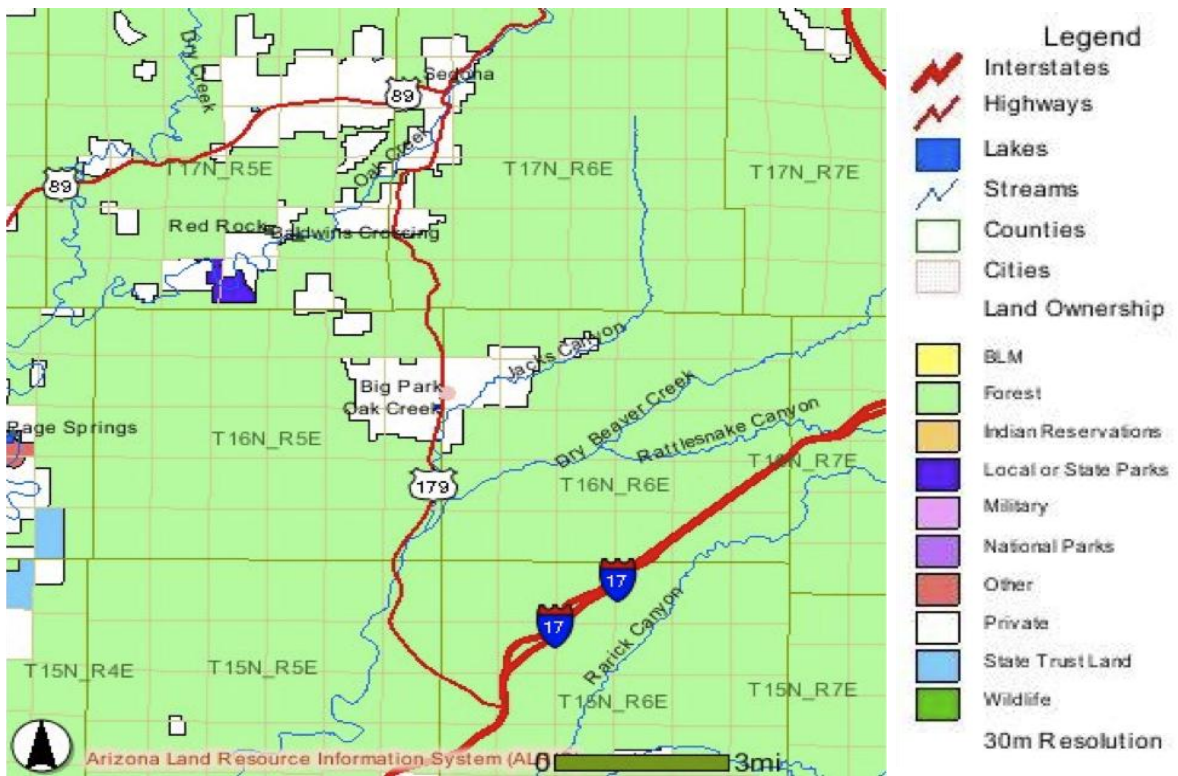


# Big Park: Unincorporated Community



Photo by Mel Copen



Offering comparable beauty and close proximity to Sedona, Big Park is an attractive place to visit or settle for many reasons. Nestled at the feet of Bell Rock, Courthouse Butte, and Castle Rock, this unincorporated area is often referred to as the Village or the Village of Oak Creek (VOC). The name is derived from the largest homeowners association in the area, the Village of Oak Creek Association (VOCA). Big Park includes the Village of Oak Creek Association and more than 50 homeowner associations and residential groupings from adjacent areas. Big Park boasts its own sewer system and an improvement district for maintaining the landscaping along the business district of the SR179 corridor, Arizona's first All-American Road. Two private water companies provide service to the area. The Big Park Regional Coordinating Council, formed by the Yavapai County Supervisors and made up of representatives from neighborhoods and businesses, advises Yavapai County governmental officials on issues pertaining to their community. Within the Big Park - VOC area are retail stores, restaurants, hiking and biking trails, destination resorts and golf courses providing a wonderful quality of life for its residents and memorable experiences for visitors to the Greater Sedona Area.

#### **Big Park Quick Facts:**

**Population: 6147**

**Elevation: 4075**

**Square Mileage: 4.54**

**County: Yavapai**

**Founded: 1960's**

**Incorporated: No**

**Highways: Interstate Hwy 17, St. Hwy 179, and St. Hwy 89A**

**Distance to Phoenix: 119 miles**

**Distance to Tucson: 230 miles**

**Distance to Grand Canyon: 116 miles**

**Zip Code(s): 86351**



Photo by Mel Copen

#### **Web-Site:**

**Big Park Regional Coordinating Council: <http://www.bigparkcouncil.org/>**

#### **Big Park Community Plan:**

**<http://www.bigparkcouncil.org/VOC/involved.php#plan> (The Big Park Regional**

Coordinating Council advises that Yavapai County no longer requires these plans. The information incorporated in this plan is for informational purposes only regarding the priorities of the representatives on the council at the time it was written.)

**Big Park Regional Coordinating Council: Vision Survey Results:**

**[http://www.bigparkcouncil.org/pdf/vision\\_survey.pdf](http://www.bigparkcouncil.org/pdf/vision_survey.pdf)**

**Profiles:**

**City Data Profile: Big Park: <http://www.city-data.com/city/Big-Park-Arizona.html>**

**Muni Net Guide: Big Park:**

**<http://www.muninetguide.com/states/arizona/big-park/>**

**Links:**

**Travel Information and Road Conditions:**

- **Arizona Department of Transportation 511:**  
**<http://www.az511.com/adot/files/>**
- **Arizona Road Conditions:** **<http://www.roadcondition.us/arizona.html>**
- **Arizona Guide: (Sedona):** **<http://www.arizonaguide.com/places-to-visit/north-central-arizona/sedona>**

**Current and Extended Weather Forecast:**

- **National Weather Service:**  
**<http://forecast.weather.gov/MapClick.php?site=fgz&textField1=34.5697&textField2=-111.8562&smap=1>**
- **Weather Underground:** **<http://www.wunderground.com/cgi-bin/findweather/getForecast?query=zmw:86351.1.99999%20>**

**National & State Park Resources:**

- **Slide Rock State Park:** **<http://azstateparks.com/Parks/SLRO/>**
- **Red Rock State Park:** **<http://azstateparks.com/Parks/RERO/>**
- **National Forest and Red Rock Pass Information:**  
**<http://www.redrockcountry.org/>**

**Transaction Privilege Tax: Yavapai County:**

**<http://www.azdor.gov/Business/TPT/TPTRates/YavapaiCounty.aspx>**

**Property Tax Rates:**

2010 PROPERTY TAX RATES									
YAVAPAI COUNTY									
PRIMARY TAX RATES					SECONDARY TAX RATES				
YAVAPAI COUNTY			1.3524			FIRE DISTRICT ASSISTANCE			0.0813
SCHOOL EQUALIZATION			0.3564			FLOOD CONTROL DISTRICT			0.1994
YAVAPAI COLLEGE			1.2046			LIBRARY DISTRICT			0.1188
<b>TOTAL PRIMARY FOR COUNTY</b>			<b>2.9134</b>			YAVAPAI COLLEGE			0.1563
						<b>TOTAL SECONDARY FOR COUNTY</b>			<b>0.5558</b>
<b>Tax Rate per \$100.00 Assessed Valuation</b>									
Data Source: <a href="http://www.co.yavapai.az.us/uploadedFiles/Departments/Assessor/Tax%20Rates.pdf">http://www.co.yavapai.az.us/uploadedFiles/Departments/Assessor/Tax%20Rates.pdf</a>									

**Arizona Department of Revenue: <http://www.azdor.gov/PropertyTax.aspx>**

**Census Data 2010: <http://2010.census.gov/2010census/>**

**Census Quickfacts: Yavapai County & Communities: <http://quickfacts.census.gov/qfd/states/04/04025.html>**



Photo by Mel Copen