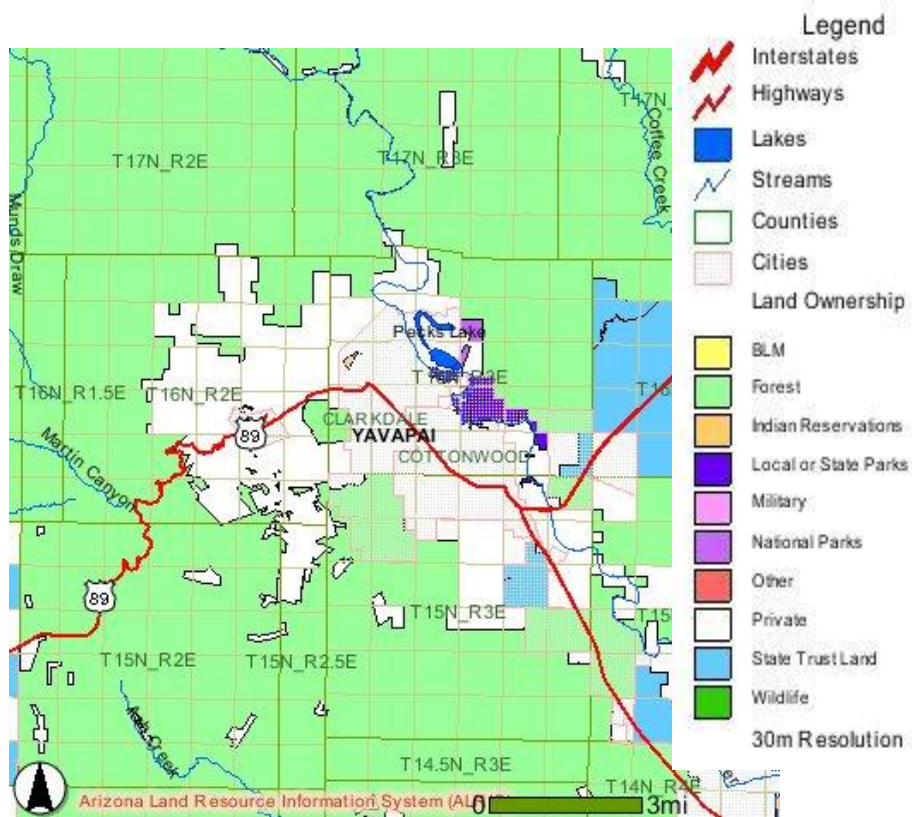


Town of Clarkdale:



Photo by [Kahlil Rinaldi](#)



The first master planned community in Arizona, Clarkdale was originally founded as a company town to provide housing and services for the smelter located in Clarkdale and the mines located in Jerome. Clarkdale contains the only rail access in the Verde Valley. Remaining infrastructure from the now closed smelter offers an availability of three phase power. It boasts the main Verde Valley campus of Yavapai College. Currently Clarkdale serves primarily as a bedroom community to surrounding cities and towns. However, through its Sustainable Clarkdale initiative, the community has adopted the mission: – To Provide an Entrepreneurial Environment Rich in Innovative, Multi-Disciplinary Solutions, and Educational and Economic Opportunities, Resulting in a Vibrant and Viable Future. This gateway to the upper Verde River community is committed to the preservation of a flowing river to provide recreation, eco-tourism, and economic development opportunities for generations to come.

Clarkdale Quick Facts:

Population: 4097

Elevation: 3546

Square Mileage: 10.1

County: Yavapai

Founded: 1912

Incorporated: yes, 1957

Highways: AZ-89, AZ-89A, AZ-260

Distance to Phoenix: 107 miles

Distance to Tucson: 223 miles

Distance to Grand Canyon: 156 miles

Nearby Highways: HWYS I-17; SR 89A; SR 260



Photo By Doug Von Gausig

Zip Code(s): 86324

Website:

- **Town of Clarkdale:** <http://www.clarkdale.az.us/index.htm>
- **Clark Memorial Library:** <http://www.clarkdale.az.us/library.html>
- **Clarkdale Chamber of Commerce:** <http://www.clarkdalechamber.com/>
- **Clarkdale Sustainability Park:** <http://clarkdalesustainabilitypark.org/>

Social Media Pages:

- **Clarkdale Centennial Celebration:**
<https://www.facebook.com/profile.php?id=100002628483846> (Facebook)
- **Clarkdale Gazebo:** <https://www.facebook.com/clarkdalegazebo> (Facebook)
- **Annual Clarkdale Historic Building and Home Tour:**
<https://www.facebook.com/event.php?eid=116574511739645> (Facebook)
- **Clarkdale Parks and Recreation:**
<http://www.facebook.com/clarkdaleparksandrecreation> (Facebook)
- **The Clarkdale Pool:** <http://www.facebook.com/clarkdalepool> (Facebook)
- **Clarkdale Chamber of Commerce (Facebook):**
<https://www.facebook.com/pages/Clarkdale-Chamber-of-Commerce/185523571490173>
- **Clarkdale Chamber of Commerce (Twitter):** <http://twitter.com/ClarkdaleAZ>

Community Profiles:

- **MuniNet Guide: Clarkdale:**
<http://www.muninetguide.com/states/arizona/clarkdale/>
- **City Data: Clarkdale:** <http://www.city-data.com/city/Clarkdale-Arizona.html>
- **Arizona Commerce Authority Profile (pdf)**
- **Wikipedia: Clarkdale:** http://en.wikipedia.org/wiki/Clarkdale,_Arizona

Links:

Travel Information and Road Conditions:

- Arizona Department of Transportation 511: <http://www.az511.com/adot/files>
- Arizona Road Conditions: <http://www.roadcondition.us/arizona.html>
- Arizona Guide - Clarkdale: <http://www.arizonaguide.com/places-to-visit/north-central-arizona/clarkdale>

Current and Extended Weather Forecast:

- National Weather Service: Clarkdale:
<http://forecast.weather.gov/MapClick.php?CityName=Clarkdale&state=AZ&site=FGZ&textField1=34.7711&textField2=-112.057&e=0>
- Weather Underground: Clarkdale: <http://www.wunderground.com/cgi-bin/findweather/hdfForecast?query=Clarkdale%2C+AZ>
- Local Clarkdale Weather Station:
<http://www.naturesongs.com/wx/clarkdaleconditions.htm>

Verde River Flow - Clarkdale Gauge:

http://waterdata.usgs.gov/nwis/uv/?site_no=09504000

National & State Park Resources:

- Tuzigoot National Monument: <http://www.nps.gov/tuzi/index.htm>
- Verde River Greenway: <http://azstateparks.com/Parks/VERI/index.html>
- National Forest and Red Rock Pass Information:
<http://www.redrockcountry.org/>

Economic Development Partners:

- Yavapai College - Verde Valley Campus
- Clarkdale-Jerome School District No.3
- Arizona School of Integrative Studies (Facebook)
- Painted Barrels on the Verde Valley Wine Trail (Facebook)
- Verde Canyon Railroad: <http://www.verdecanyonrr.com/>
- Verde Canyon Railroad (Facebook)
- Verde River (Facebook)
- Verde Valley Birding And Nature Festival
- Verde Valley Medical Center
- Verde Valley Wine Consortium: <http://verdevalleywineconsortium.com/>
- Verde Valley Wine
- @VWineTrail on Twitter
- Local First Arizona: <http://www.localfirstaz.com/index.php>

Transaction Privilege Tax: Clarkdale:

<http://www.azdor.gov/Business/TPT/TPTRates/Clarkdale.aspx>

PROPERTY TAX:

2010 TAX RATES												
YAVAPAI COUNTY & CLARKDALE												
TAX DIST. #	JURISDICTIONS & DESCRIPTIONS	PRIMARY TAX RATES					SECONDARY TAX RATES					
		COUNTY/STATE/ COLLEGE	CITY / TOWN	SCHOOL DIST.	PRIM. TOTAL	REDUC. RATE	COUNTY /STATE / COLLEGE	CITY / TOWN	SCHOOL DIST.	FIRE DIST.	SPEC. DIST.	SEC. TOTAL
300	Clkdl/Jerome S.D., Valley Academy Education D.	2.9134	0.0000	2.9453	5.8587	1.1750	0.5558	0.0000	0.7462	0.0000	0.0000	1.3020
301	Clkdl/Jerome S.D., Clarkdale F.D., Vly Acad Ed D.	2.9134	0.0000	2.9453	5.8587	1.1750	0.5558	0.0000	0.7462	1.7025	0.0000	3.0045
360	Clkdl/Jerome S.D., Clarkdale, Clarkdale F.D., Vly Acad Ed D.	2.9134	0.9121	2.9453	6.7708	1.1750	0.5558	0.0000	0.7462	1.7025	0.0000	3.0045
361	Clkdl/Jerome S.D., Clarkdale, Clarkdale Indian Res. Dist. #3, Valley Academy Education D.	2.9134	0.9121	2.9453	6.7708	1.1750	0.5558	0.0000	0.7462	0.0000	0.0000	1.3020
370	Clkdl/Jerome S.D., Verde Valley F.D., Vly Acad Ed D.	2.9134	0.0000	2.9453	5.8587	1.1750	0.5558	0.0000	0.7462	2.0222	0.0000	3.3242
371	Clkdl/Jerome S.D., Cottonwood, Verde Valley F.D., Valley Academy Education D.	2.9134	0.0000	2.9453	5.8587	1.1750	0.5558	0.0000	0.7462	2.0222	0.0000	3.3242
380	Clkdl/Jerome S.D., Jerome, Vly Acad Ed D.	2.9134	0.6511	2.9453	6.5098	1.1750	0.5558	0.0000	0.7462	0.0000	0.0000	1.3020
382	Clkdl/Jerome S.D., Valley Academy Education D.	2.9134	0.0000	2.9453	5.8587	1.1750	0.5558	0.0000	0.7462	0.0000	0.0000	1.3020
Tax Rate per \$100.00 Assessed Valuation												
Data Source: http://www.co.yavapai.az.us/uploadedFiles/Departments/Assessor/Tax%20Rates.pdf												
2010 PROPERTY TAX RATES												
YAVAPAI COUNTY												
		PRIMARY TAX RATES					SECONDARY TAX RATES					
	YAVAPAI COUNTY			1.3524					FIRE DISTRICT ASSISTANCE			0.081
	SCHOOL EQUALIZATION			0.3564					FLOOD CONTROL DISTRICT			0.199
	YAVAPAI COLLEGE			1.2046					LIBRARY DISTRICT			0.119
	TOTAL PRIMARY FOR COUNTY			2.9134					YAVAPAI COLLEGE			0.156
									TOTAL SECONDARY FOR COUNTY			0.556
Tax Rate per \$100.00 Assessed Valuation												
Data Source: http://www.co.yavapai.az.us/uploadedFiles/Departments/Assessor/Tax%20Rates.pdf												

Arizona Department of Revenue:

<http://www.azdor.gov/PropertyTax.aspx>

Census Data 2010: <http://2010.census.gov/2010census/>

Census Quickfacts: Yavapai County & Communities:

<http://quickfacts.census.gov/qfd/states/04/04025.html>

Comparative Development Costs Survey Documents:

- **Clarkdale Economic Base 2008: Clarkdalebaseeconomic.pdf**
- **Clarkdale General Plan Update: In Progress:**
http://www.clarkdale.az.us/general_plan.htm
- **Clarkdale Permitting Fees.pdf**
- **ClarkdaleFeeWksht.pdf**
- **ClarkdaleImpactFees.pdf**
- **ICCBuildingValuation2007.pdf** (Instructions Only)
- **CLKDLE RES1248 ICC BVD 08-2007.pdf** (use \$94.99 for all uses)
- **Res1248FeeSchedule.pdf**
- **Clarkdale-ACA.pdf**



Photo By Bill Regner