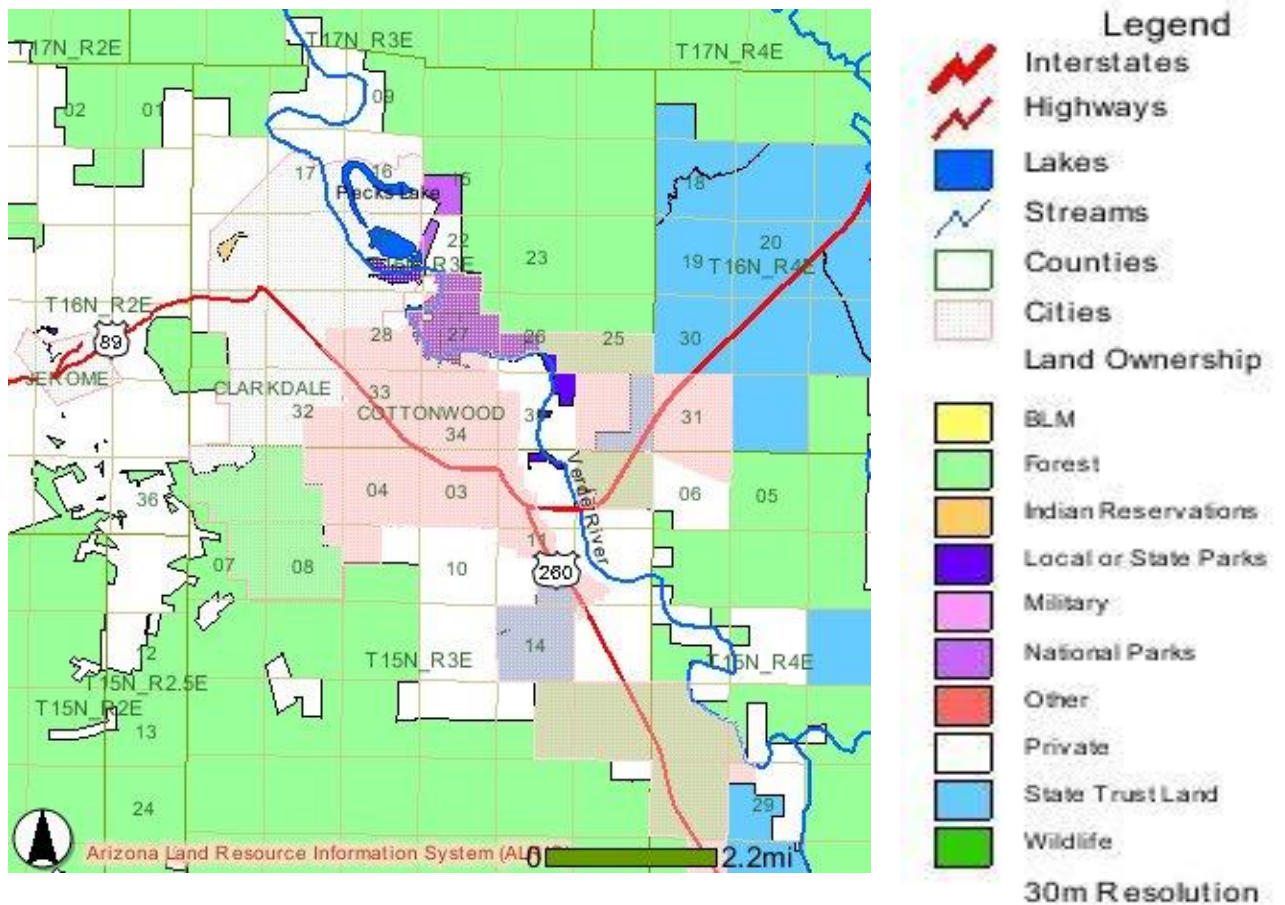


City of Cottonwood:



Photo Courtesy of CEDC



The City of Cottonwood serves as a primary medical, commercial, industrial, and retail center in the Verde Valley. Set at the foot of the Black Hills and Mingus Mountain and adjacent to the Verde River at elevations ranging from 3,300 to 3,900 feet, the community boasts an abundance of natural beauty, community amenities, and proximity to many sites of interest. Riverfront Park and Dead Horse Ranch State Park provide access to one of Arizona's best riparian habitats within the Verde River Greenway. The Old Town area, featuring a variety of dining, arts and crafts shops, and wine and gourmet food

Cottonwood Quick Facts:

Population: 11265
Elevation: 3320
Square Mileage: 10.7
County: Yavapai
Founded: 1908
Incorporated: yes – 1960
Highways: I-17, SR260, SR89, SR89A
Distance to Phoenix: 106 miles
Distance to Tucson: 219 miles
Distance to Grand Canyon: 128 miles
Zip Code(s): 86326

Website:

- [City of Cottonwood](#)
- [Cottonwood Economic Development Council](#)
- [Cottonwood Chamber of Commerce](#)

Social Media Pages:

- [Cottonwood Chamber](#) (Facebook)

Community Profiles:

[MuniNet Guide: Cottonwood](#)

[City Data: Cottonwood](#)

[AZ Commerce Authority](#)

[Wikipedia: Cottonwood](#)



Photo by Karen Leff

[American Towns: Cottonwood](#)

[Arizona Guide: Cottonwood](#)

Links:

Travel Information and Road Conditions:

- [Arizona Department of Transportation 511](#)
- [Arizona Road Conditions](#)
- [Arizona Guide - Cottonwood:](#)
- **Current and Extended Weather Forecast:**
 - [National Weather Service: Cottonwood](#)
 - [Weather Underground: Cottonwood](#)

Economic Development Partners:

- [Old Town Association](#)
- [Visit Cottonwood](#)
- [Verde Valley Wine Consortium](#)
- [Verde Valley Medical Center](#)
- [Old Town Cottonwood](#) (Facebook)
- [Painted Barrels on the Verde Valley Wine Trail](#)
- [@VWineTrail on Twitter](#)
- [Verde Valley Wine Trail](#) (Facebook)
- [Local First Arizona](#)

National & State Park Resources

- [Dead Horse Ranch State Park](#)
- [Verde River Greenway](#)
- [National Forest and Red Rock Pass Information](#)

[Transaction Privilege Tax](#)

Property Tax:

2010 TAX RATES												
YAVAPAI COUNTY & COTTONWOOD												
TAX DIST. #	JURISDICTIONS & DESCRIPTIONS	PRIMARY TAX RATES					SECONDARY TAX RATES					
		COUNTY/ STATE/ COLLEGE	CITY / TOWN	SCHOOL DIST.	PRIM. TOTAL	REDUC. RATE	COUNTY / STATE / COLLEGE	CITY / TOWN	SCHOOL DIST.	FIRE DIST	SPEC. DIST.	SEC. TOTAL
600	Cttnwd Oak Ck S.D., Valley Academy Education D.	2.9134	0.0000	2.9477	5.8611	1.1759	0.5558	0.0000	0.7808	0.0000	0.0000	1.3366
601	Cttnwd Oak Ck S.D., Sedona F.D., Vly Acad Ed D.	2.9134	0.0000	2.9477	5.8611	1.1759	0.5558	0.0000	0.7808	1.4000	0.0000	2.7366
620	Cttnwd Oak Ck S.D., Verde Valley F.D., Vly Acad Ed D.	2.9134	0.0000	2.9477	5.8611	1.1759	0.5558	0.0000	0.7808	2.0222	0.0000	3.3588
621	Cttnwd Oak Ck S.D., Verde Valley F.D., Vly Acad Ed D., Quail Canyon Dom WID	2.9134	0.0000	2.9477	5.8611	1.1759	0.5558	0.0000	0.7808	2.0222	0.0000	3.3588
622	Cttnwd Oak Ck S.D., Camp Verde, Verde Vly F.D., Vly Acad Ed D.	2.9134	0.0000	2.9477	5.8611	1.1759	0.5558	0.0000	0.7808	2.0222	0.0000	3.3588
623	Cttnwd Oak Ck S.D., Verde Vly F.D., Vly Acad Ed D., Spring Creek Ranch Domestic W.I.D.	2.9134	0.0000	2.9477	5.8611	1.1759	0.5558	0.0000	0.7808	2.0222	0.0000	3.3588
630	Cttnwd Oak Ck S.D., Cottonwood, Vly Acad Ed D.	2.9134	0.0000	2.9477	5.8611	1.1759	0.5558	0.0000	0.7808	0.0000	0.0000	1.3366
660	Cttnwd Oak Ck S.D., Clarkdale, Clarkdale F.D., Vly Acad Ed D.	2.9134	0.9121	2.9477	6.7732	1.1759	0.5558	0.0000	0.7808	1.7025	0.0000	3.0391
681	Cttnwd Oak Ck S.D., Cottonwood, Verde Valley F.D., Valley Academy Education D.	2.9134	0.0000	2.9477	5.8611	1.1759	0.5558	0.0000	0.7808	2.0222	0.0000	3.3588
Tax Rate per \$100.00 Assessed Valuation												
2010 PROPERTY TAX RATES												
YAVAPAI COUNTY												
	PRIMARY TAX RATES					SECONDARY TAX RATES						
	YAVAPAI COUNTY			1.3524					FIRE DISTRICT ASSISTANCE			0.0813
	SCHOOL EQUALIZATION			0.3564					FLOOD CONTROL DISTRICT			0.1994
	YAVAPAI COLLEGE			1.2046					LIBRARY DISTRICT			0.1188
	TOTAL PRIMARY FOR COUNTY			2.9134					YAVAPAI COLLEGE			0.1563
									TOTAL SECONDARY FOR COUNTY			0.5558
Tax Rate per \$100.00 Assessed Valuation												
Data Source: http://www.co.yavapai.az.us/uploadedFiles/Departments/Assessor/Tax%20Rates.pdf												

[Arizona Department of Revenue](#)

[Yavapai County Assessor 2010 Property Tax Rates](#)

[Census Data 2010](#)

[Census Quickfacts: Yavapai County & Communities](#)

[Cottonwood Aerial Boundary Map](#)

[Cottonwood Street Map](#)

Comparative Development Costs Survey Documents:

- [Cottonwood General Plan: Adopted 2004](#)
- [Ctnwd BldgPrmt Appl.pdf](#)
- [CTNWD Fee Sched Planning.pdf](#)
- [CTNWD Water-Sewer Rates. Pdf](#)
- [Ctnwd ICC BVD 04-1996.pdf](#)
- [Cottonwood ACA.pdf](#)
- [CtnwdProposedRates.pdf](#)

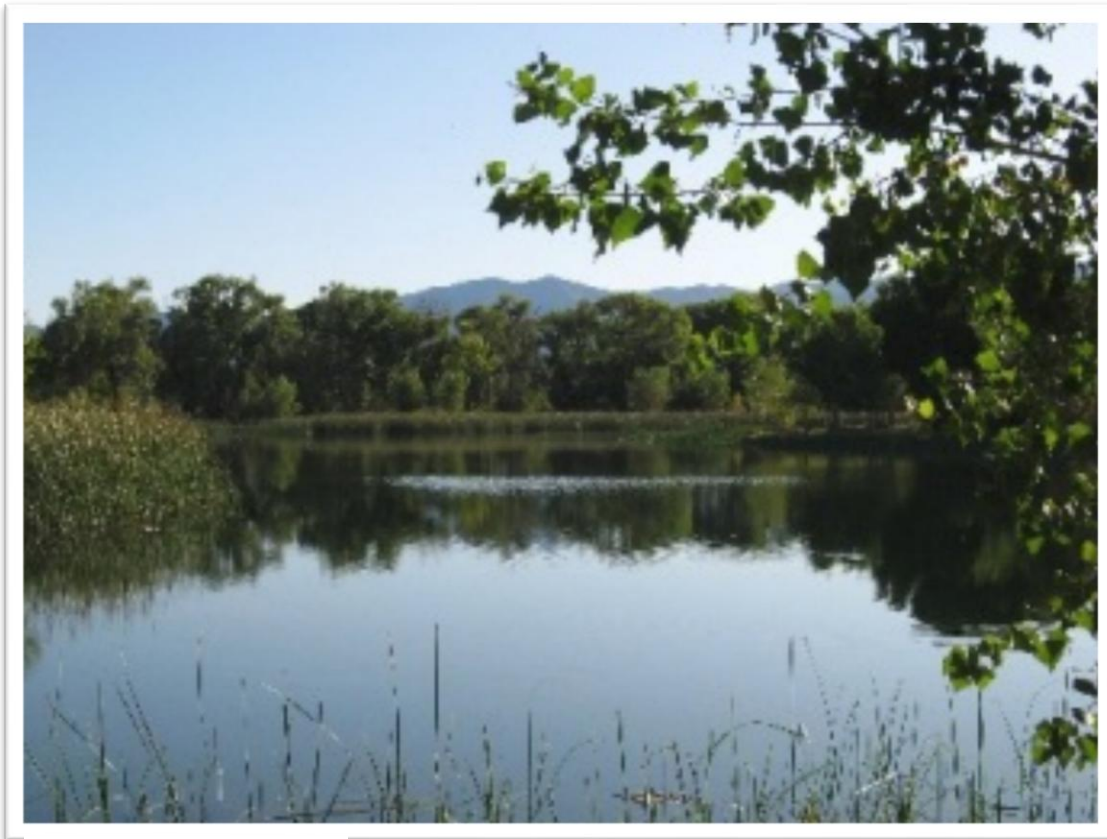


Photo By Diane Joens