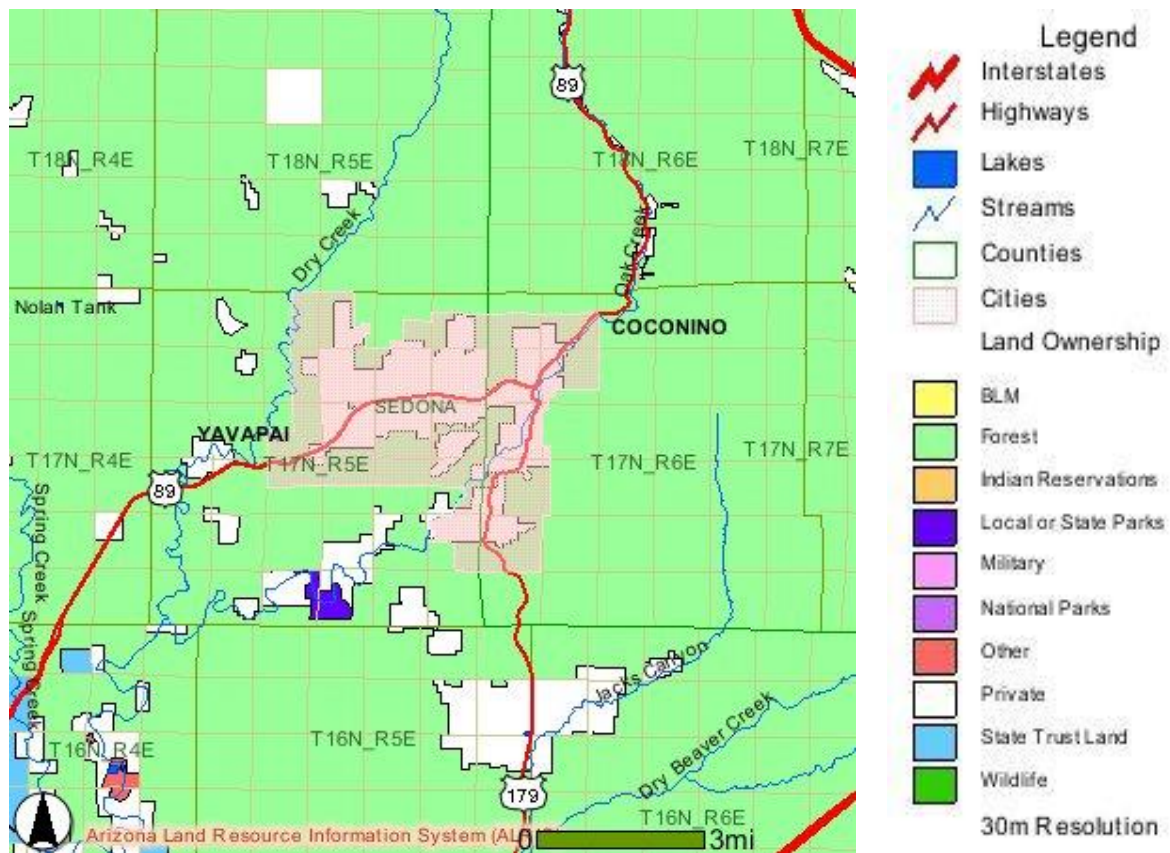


City of Sedona:



Photo by Ian Whitehead



Often called "Red Rock Country" Sedona is a four seasons playground along beautiful Oak Creek at the northern most point of the Verde Valley. Its 4,500-foot elevation ensures a mild climate suitable for year round enjoyment of its many recreational opportunities and points of interest. The collection of Sedona's impressive, natural endowments includes the 1.8 million-acre Coconino National Forest, which surrounds this city and encompasses seven intriguing wilderness areas. In fact, it is hardly a surprise that the winding road through Oak Creek Canyon is not only Arizona's first officially designated scenic highway, it is the first leg of a day trip to one of the world's great wonders, nearby Grand Canyon. Picture perfect vistas capture with 360 degrees of breath-taking and soul-nurturing beauty.

Certainly the hospitality center of the region, whether you're into history and archaeology; [arts and culture](#); [shopping](#); [outdoor sports](#); or the [spiritual and metaphysical](#), imagine doing all this in a backdrop of some of the most spectacular scenery in the world. Along with its myriad geological features, many tourists relate Sedona's exceptional charm to the fact that they can conveniently spend a day [hiking](#), [horseback riding](#), [touring](#), or bouncing in a [Jeep](#) on trails and dirt roads that crisscross this area, and then enjoy the comfort of deluxe Sedona hotels, country inns and prestigious resorts at night. Dining opportunities range from hearty breakfast cafés to fine cuisine prepared by world-class chefs. Unmatched in the region are the many retail shops stocked with one of a kind creations from local artisans and keep-sake reminders of a memorable visit. Indeed, the paradox and enchantment of Sedona are the [luxurious hotels, motels and resorts](#), [bed & breakfast establishments](#), [unique shops](#), [impressive art galleries](#), [performing arts](#) and [fine restaurants](#) all nestled in a rugged canyon surrounded by national forest.

The rich, the famous, the seekers and the believers, all, are drawn here each in their own pursuit of being touched; each in their own way.

SEDONA QUICK FACTS

Population: 11,000

Elevation: 4,500 feet

Square Mileage: 19 sq. mi.

Counties: Coconino and Yavapai

Founded: 1902

Incorporated: Yes - 1988

Highways: Interstate Hwy 17, St. Hwy 179, and St. Hwy 89A

Distance to Phoenix: 119 miles

Distance to Tucson: 230 miles

Distance to the Grand Canyon: 114 miles

Zip Code(s): 86336, 86339, 86340, 86341, 86351

Website(s):

[City of Sedona](#)

[Sedona Chamber of Commerce](#)

[Sedona Tourism Bureau](#)

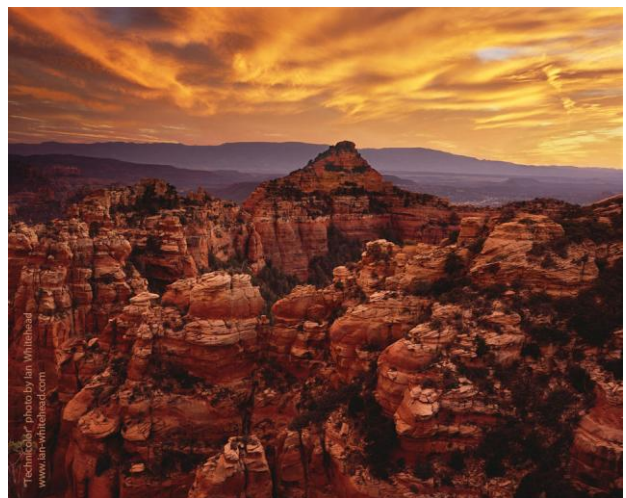


Photo by Ian Whitehead

[Sedona Verde Valley Tourism Council](#)

Social Media Pages:

[Twitter](#) [Facebook](#)

Community Profiles:

[Muni Net Guide: Sedona](#)

[City Data: Sedona](#)

[Wikipedia: Sedona](#)

AZ Commerce Authority Profile: Sedona (link to Sedona_ACA.pdf)

Links:

Travel Information and Road Conditions:

- [Arizona Department of Transportation 511](#)
- [Arizona Road Conditions](#)
- [Arizona Guide - Sedona:](#)
- Current and Extended Weather Forecast:
 - [National Weather Service: Sedona](#)
 - [Weather Underground: Sedona](#)

National & State Park Resources

- [Slide Rock State Park](#)
- [Red Rock State Park](#)
- [National Forest and Red Rock Pass Information](#)

Economic Development Partners

- [Sedona Metaphysical Spiritual Association](#)
- [Sedona Events Alliance](#)
- [Sedona Gallery Association](#)
- Sedona Lodging Council
- [Seniors in Action Business Alliance](#)
- [Sedona Restaurant Association](#)
- [Sedona Young Professionals Association](#)
- [Sedona Area Restaurant Council](#)
- [Local First Arizona](#)

[Transaction Privilege Tax – Sedona in Coconino County](#)

Transaction Privilege Tax – Sedona in Yavapai County

Property Tax:

Yavapai County

2010 TAX RATES												
YAVAPAI COUNTY & SEDONA												
TAX DIST. #	JURISDICTIONS & DESCRIPTIONS	PRIMARY TAX RATES					SECONDARY TAX RATES					
		COUNTY / STATE / COLLEGE	CITY / TOWN	SCHOOL DIST.	PRIM. TOTAL	REDUC. RATE	COUNTY / STATE / COLLEGE	CITY / TOWN	SCHOOL DIST.	FIRE DIST	SPEC. DIST.	SEC. TOTAL
970	Sedona Oak Ck S.D., Sedona F.D., Valley Academy Ed. D.	2.9134	0.0000	0.9671	3.8805	0.3695	0.5558	0.0000	1.0410	1.4000	0.0492	3.0460
971	Sedona Oak Ck S.D., Sedona F.D., Big Park C.I.D, W.W.I.D, Red Rock Rd Enh Dist., Valley Academy Education D.	2.9134	0.0000	0.9671	3.8805	0.3695	0.5558	0.0000	1.0410	1.4000	0.0492	3.0460
975	Sedona Oak Ck S.D., Sedona F.D., Valley Academy Ed. D.	2.9134	0.0000	0.9671	3.8805	0.3695	0.5558	0.0000	1.0410	1.4000	0.0000	2.9968
976	Sedona Oak Ck S.D., Sedona, Sedona F.D., Valley Academy Education D.	2.9134	0.0000	0.9671	3.8805	0.3695	0.5558	0.0000	1.0410	1.4000	0.0000	2.9968
977	Sedona Oak Ck S.D., Sedona F.D., Retreat at Oak Creek D.W.I.D., Valley Academy Education D.	2.9134	0.0000	0.9671	3.8805	0.3695	0.5558	0.0000	1.0410	1.4000	0.0000	2.9968
978	Sedona Oak Ck S.D., Red Rock Rd Ehn Dist., Valley Academy Education D.	2.9134	0.0000	0.9671	3.8805	0.3695	0.5558	0.0000	1.0410	1.4000	0.0492	3.0460
Tax Rate per \$100.00 Assessed Valuation												
Data Source: http://www.co.yavapai.az.us/uploadedFiles/Departments/Assessor/Tax%20Rates.pdf												
2010 PROPERTY TAX RATES												
YAVAPAI COUNTY												
		PRIMARY TAX RATES					SECONDARY TAX RATES					
	YAVAPAI COUNTY			1.3524					FIRE DISTRICT ASSISTANCE			0.081
	SCHOOL EQUALIZATION			0.3564					FLOOD CONTROL DISTRICT			0.199
	YAVAPAI COLLEGE			1.2046					LIBRARY DISTRICT			0.119
	TOTAL PRIMARY FOR COUNTY			2.9134					YAVAPAI COLLEGE			0.156
									TOTAL SECONDARY FOR COUNTY			0.556
Tax Rate per \$100.00 Assessed Valuation												
Data Source: http://www.co.yavapai.az.us/uploadedFiles/Departments/Assessor/Tax%20Rates.pdf												

Coconino County Property Tax Information

Coconino County Property Tax Authorities

Arizona Department of Revenue

Census Data 2010

[Census Quickfacts: Yavapai County & Communities](#)

[Sedona Community Plan: Adopted 2002](#)

Comparative Development Costs Survey Documents:

- [Sedona_WasteWaterRates.pdf](#)
- [SedonaDevelopmentImpactFee-2009.pdf](#)
- [SedonaFinal_FEE_SCHEDULE_July0903.pdf](#)
- [SedonaPermitApplicationComMFR.pdf](#)
- [SedPermitAppInst_SFR.pdf](#)
- [City of Sedona Documents](#)
- [ICC Building Valuation Data](#)
- [Sedona City Codes](#)
- [Sedona_ACA.pdf](#)



Photo by Ian Whitehead