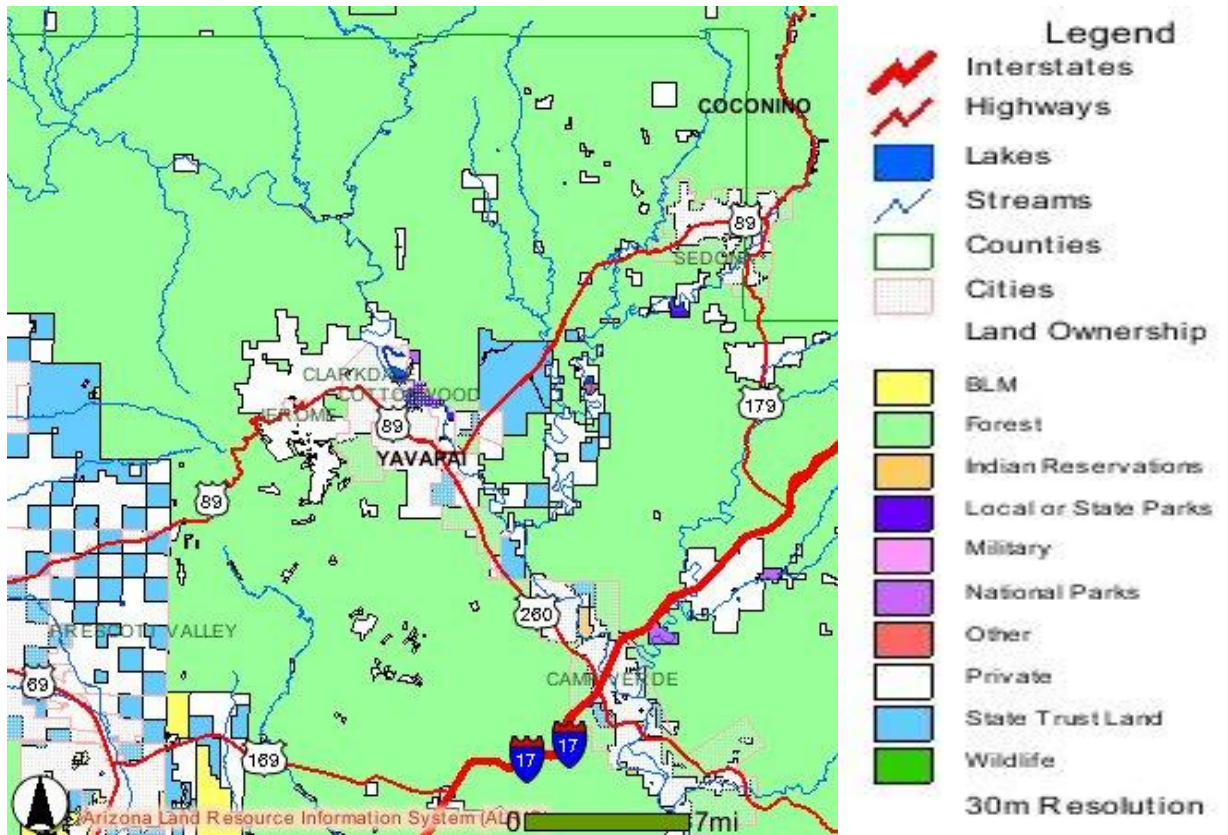


Verde Valley Region:



Photo by Bill Regner



The Verde Valley includes about 714 square miles located in the geographic center of Arizona, about 100 miles north of the Phoenix metropolitan area. The Verde River runs through the valley from northwest to southeast and is augmented by flows from Sycamore Canyon, Oak Creek, Beaver Creek and West Clear Creek. The area is unsurpassed in its variety of physical beauty with the red rocks and Mogollon Rim to the north and east and the Black Hills and Mingus Mountain dominating the western and southern portions of the valley. (Cottonwood Chamber text)

Website:

Verde Valley Regional Economic Organization: VVREO: <http://www.vvreo.com/>

Profiles:

Wikipedia:Verde Valley:
http://en.wikipedia.org/wiki/Verde_Valley

City Data: Verde Valley:
http://www.city-data.com/county/Yavapai_County-AZ.html



Courtesy of Page Springs Winery

Links:

Gateway To Sedona:
<http://www.gatewaytosedona.com/department/category/VerdeValley>

Arizona's Verde Valley: <http://www.arizonaverdevalley.com/>

Verde Valley Arizona – Photo Gallery: <http://www.go-arizona.com/Verde-Valley/Photos-Videos>

Regional Map: Verde Valley: <http://www.sedona-verdevalley.com/images/RegionalMap.pdf>

Verde Valley Wine Trail: <http://www.sedona-verdevalley.com/cottonwood/verdevalleywinetrail.html>

Arizona Indicators: Arizona and Yavapai County Demographics: <http://arizonaindicators.org/demographics/demographics-overview>

Verde Valley Asset Inventory: [http://www.cba.nau.edu/RPI/projects/FINAL%20Verde Valley%20Asset%20Inventory%202-6-08.pdf](http://www.cba.nau.edu/RPI/projects/FINAL%20Verde%20Valley%20Asset%20Inventory%202-6-08.pdf)

Wine Tourism Study: Wine Tourism in Arizona-Final 6-30-11[1].pdf

TPT – Yavapai County by Community: <http://www.azdor.gov/Business/TPT/TPTRates/YavapaiCounty.aspx>

Property Tax Rates: Yavapai County: <http://www.co.yavapai.az.us/uploadedFiles/Departments/Assessor/Tax%20Rates.pdf>

Arizona Department of Revenue: <http://www.azdor.gov/PropertyTax.aspx>

Verde Valley Regional Land Use Plan: <http://www.co.yavapai.az.us/WorkArea/showcontent.aspx?id=24964> Adopted by Yavapai Co. Board of Supervisors November 2006

Verde Valley Regional Trails Concept Plan: VVTrailPlanFinalDraft[1].pdf

Esri: Plug In The Following Zip Codes: http://www.esri.com/data/esri_data/tapestry.html

Camp Verde	86322
Cottonwood	86326
Clarkdale	86324
Big Park	86351
Cornville	86325
Sedona	86336, 86339, 86340, 86341, 86351

Jerome 86331
Beaver Creek 86335

National Park Resources:

- **Dead Horse Ranch State Park:** <http://azstateparks.com/Parks/DEHO/index.html>
- **Fort Verde State Historic Park:** <http://azstateparks.com/Parks/FOVE/index.html>
- **Jerome State Historic Park:** <http://azstateparks.com/Parks/JERO/index.html>
- **Montezuma Castle National Monument:** <http://www.nps.gov/moca/index.htm>
- **National Forest and Red Rock Pass Information:** <http://www.redrockcountry.org/>
- **Red Rock State Park:** <http://azstateparks.com/Parks/RERO/>
- **Slide Rock State Park:** <http://azstateparks.com/Parks/SLRO/>
- **Tuzigoot National Monument:** <http://www.nps.gov/tuzi/index.htm>
- **Verde River Greenway:** <http://azstateparks.com/Parks/VERI/index.html>

Census Data 2010: <http://2010.census.gov/2010census/>

Census Quickfacts: Yavapai County & Communities:
<http://quickfacts.census.gov/qfd/states/04/04025.html>



Photo by John Wolever